

PRODUCT INFO

Clamp mountings CG are made of drawn aluminum profiles and have a slitted clamping point machined by cutting methods.

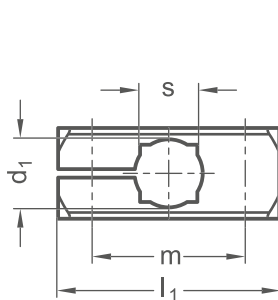
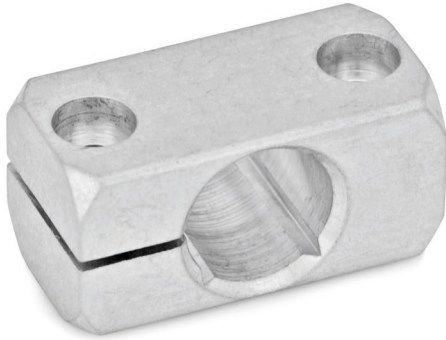
The fastening surface with two bores serves as an interface or for fastening the clamp mounting to the place of use.

The bore distance m is the same for all clamp mountings and the available accessories with fastening options to ensure simple replacement and combination.

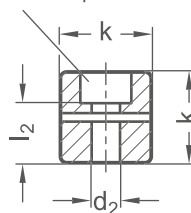
The bore at the clamping point is arranged in the plane parallel to the fastening surface. It receives rods and tubes with round or square cross-sections via the additionally incorporated square bore.

Clamp mountings CG do not have their own thread. For clamping, socket cap screws together with clamping threads at the place of use reduce the bore cross-section. For regular tool-free clamping, adjustable hand lever sets are available as accessories under the designation HK.

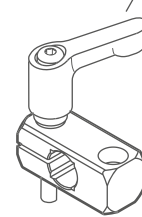
RoHS-compliant product



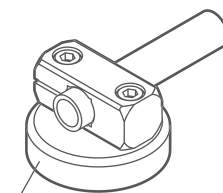
Contersinking for socket cap screw DIN 912



Adjustable hand lever set HK



Application example



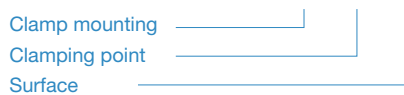
Retaining magnet available as accessory

Clamping point							Accessories
Bore d₁	Pass-through bore d₂ for	k	l₁	l₂	m	Square s	Hand lever set HK for d₂
B 8	M 4	14	31,5	10	22	-	M 4-20
B 10	M 5	16	38	10,5	27	8	M 5-25
B 12	M 5	16	38	10,5	27	10	M 5-25
B 15	M 6	20	45	14	32	12	M 6-25
B 16	M 6	20	45	14	32	-	M 6-25
B 20	M 6	25	50	19	36	16	M 6-32

Surface	
o	
G	Tumbled, matt
S	Anodized black

ORDER KEY

CG - d₁ - o



ACCESSORIES

- Adjustable hand lever set **HK** see page 172

ON REQUEST

- Clamping point with special diameter
- Screw points with hex head screws
- Surface anodized in colors
- Retaining magnet

2D
2C
2B
2A
1D
1C
1B
1A