

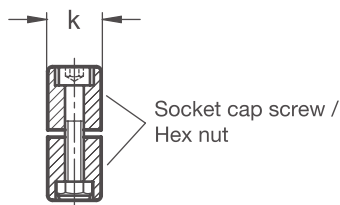
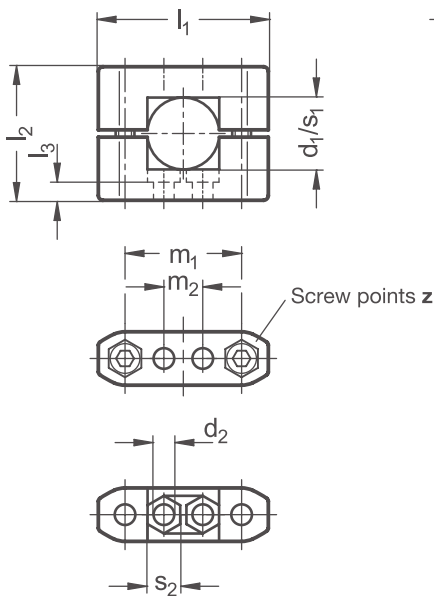
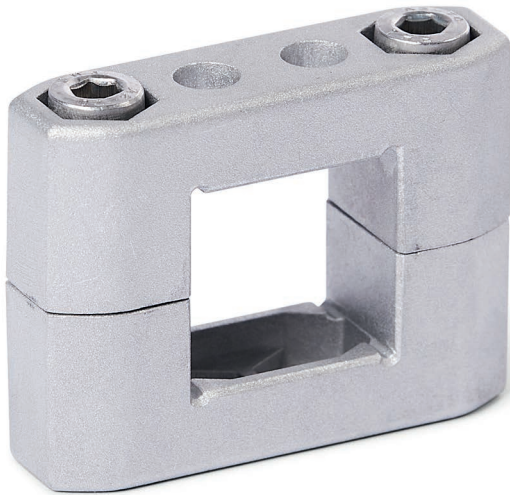
PRODUCT INFO

Tube supports CM of die-cast aluminum have a split clamping point with round or square cross-section that has been partially machined by cutting methods.

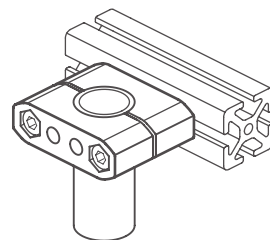
The bore at the clamping point is arranged in the plane parallel to the flange faces of the tube support halves. It receives typically available construction tubes with full surface contact via two ribs in the cross-section of the bore.

At the screw points, hex socket cap screws reduce the bore cross-section for clamping.

RoHS-compliant product



Application example:
Tube support mounted on aluminum profile

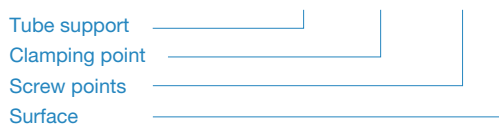


Clamping point								d ₂	Clamping length k	l ₁	l ₂	l ₃	m ₁	m ₂	s ₂	Hex socket cap screws
Bore d ₁				Square s ₁												
B 8	B 10	B 12	B 14	V 8	V 10	V 12	V 14	6,2	17	52	38	3,5	36	10,5	10	M 6-30
B 15	B 16	B 18	-	V 15	V 16	V 18	-	6,2	17	52	38	3,5	36	10,5	10	M 6-30
B 20	B 25	B 30	-	V 20	V 25	V 30	-	8,5	22	70	55	4	48	16	13	M 8-45
B 40	B 42	B 45	B 48	V 40	V 45	V 50	-	10,5	27	100	80	5	73	30	17	M 10-65
B 50	-	-	-	-	-	-	-	10,5	27	100	80	5	73	30	17	M 10-65
B 60	-	-	-	V 60	-	-	-	10,5	27	100	90	5	78	30	17	M 10-75

Screw points z	
1	Hex socket cap screw steel, zinc-plated DIN 912-8.8 and lock nut steel DIN 985-8, zinc-plated
2	Hex socket cap screw stainless steel DIN 912-A2-70 and lock nut stainless steel DIN 985-A2, glide coating

Surface o	
2	textured powder-coated, Black RAL 9005
8	blasted, matt

ORDER KEY **CM - d₁ / s₁ - z - o**



ON REQUEST

- Clamping point with special diameter
- Screw points with hex head screws or mixed screw / adjustable hand lever elements
- Surface ball-burnished, anodized or powder-coated in other RAL colors

2D
2C
2B
2A
1D
1C
1B
1A