



PRODUCT INFO

Flanged clamps FSZ.P of glass fiber reinforced polyamide have a slitted clamping point.

The flange with two bores serves as an interface or for fastening the clamp to the place of use. The bore at the clamping point is arranged in the plane parallel to the face of the flange. It receives typically available construction tubes with full surface contact over the entire cross-section of the bore.

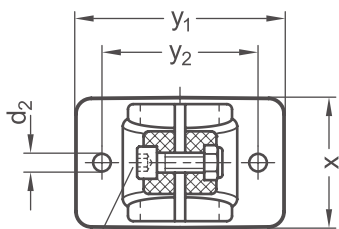
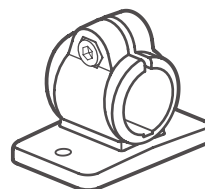
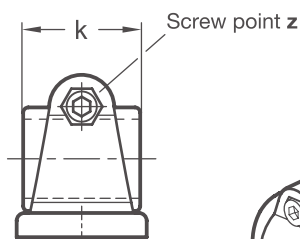
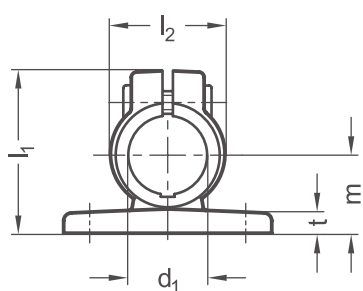
Adapter bushings RBS.P can be used to reduce the bore cross-sections to a smaller diameter.

At the screw point, a hex socket cap screw or an adjustable hand lever reduces the bore cross-section for clamping.

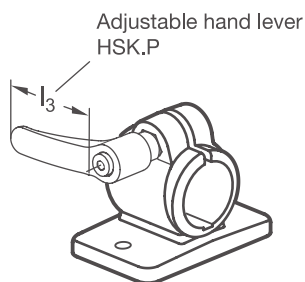
Adjustable hand levers are intended for repeated, tool-free clamping. Under the designation HSK.P, these are available separately for individual use and in other designs. Compared with the tool-operated hex socket cap screw, the clamping force achievable with an adjustable hand lever is lower due to the shorter lever length.

The plastic used in surface VB is made from blue, visually detectable and FDA-compliant plastic granulate as per FDA CFR.21 and EU 10/2011.

RoHS-compliant product



Socket cap screw / Hex nut



Clamping point Bore d₁	Clamping length k	d₂	l₁	l₂	m	t	x	y₁	y₂	Hex socket cap screws	Accessories recom. hand lever	
											HSK.P for z lever length l₃	
B 18	29	5,3	41	29	18	5	34,5	52	40	M 6-18	44	63
B 30	45	6,5	61,5	44	30	8	49,5	80	60	M 8-25	63	78

Screw point

z	
2	Hex socket cap screw stainless steel DIN 912-A2-70 and lock nut stainless steel DIN 985-A2, glide coating

Surface

o	
2	Polyamide (PA), glass fiber reinforced, Black RAL 9005 matt, temperature resistant up to 100 °C
4	Polyamide (PA), glass fiber reinforced, Gray RAL 7040 matt, temperature resistant up to 100 °C
VB	Polyamide (PA), glass fiber reinforced, Blue RAL 5005 matt, temperature resistant up to 100 °C , FDA compliant plastic granulate, visually detectable

ORDER KEY

FSZ.P - d₁ - k - z - o



ACCESSORIES

- Adapter bushings **RBS.P** see page 26
- Adjustable hand levers **HSK.P** see page 28

2D
2C
2B
2A
1D
1C
1B
1A