

### PRODUCT INFO

**Joint clamps GKP** of die-cast aluminum or precision-cast stainless steel have slitted clamping points machined by cutting methods. They are comprised of swivel clamps LKT and LKP.

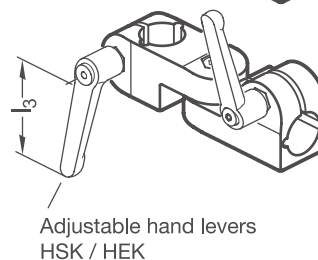
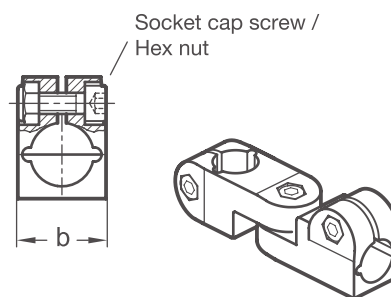
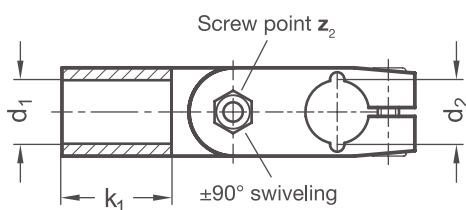
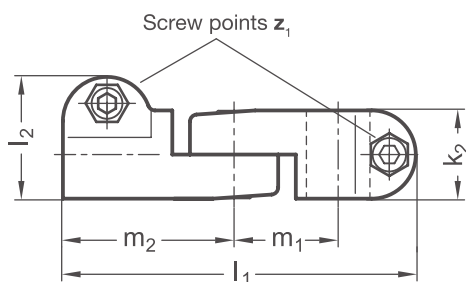
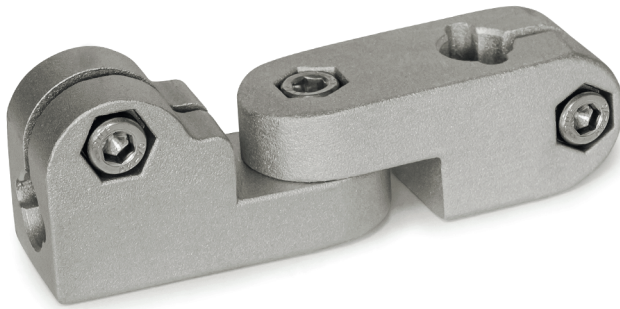
The clamping point bores are arranged at an angle of 90° and connected by the clamping joint to swivel by ± 90°. They receive typically available rods and tubes with full surface contact over the entire cross-section of the bore.

At the screw points, hex socket cap screws or adjustable hand levers reduce the bore cross-section for clamping.

A hex socket cap screw or an adjustable hand lever at the clamping joint serves for locking the joint axis.

Adjustable hand levers are intended for repeated, tool-free clamping. Under the designation HSK or HEK, these are available separately for individual use and in other designs. Compared with the tool-operated hex socket cap screw, the clamping force achievable with an adjustable hand lever is lower due to the shorter lever length.

### RoHS-compliant product



Aluminum														Accessories recom. hand lever		
Clamping point 1 Bore <b>d<sub>1</sub></b>	Clamping point 2						<b>b</b>	<b>k<sub>1</sub></b>	<b>k<sub>2</sub></b>	<b>l<sub>1</sub></b>	<b>l<sub>2</sub></b>	<b>m<sub>1</sub></b>	<b>m<sub>2</sub></b>	Hex socket cap screws <b>z<sub>1</sub> / z<sub>2</sub></b>	HSK for aluminum clamp	
	Bore <b>d<sub>2</sub></b>															
B12	B12	B14	B15	B16	B18		25	31,5	25	100	34,5	29,5	48,5	M 6-20	63	63
B14	B12	B14	B15	B16	B18		25	31,5	25	100	34,5	29,5	48,5	M 6-20	63	63
B15	B12	B14	B15	B16	B18		25	31,5	25	100	34,5	29,5	48,5	M 6-20	63	63
B16	B12	B14	B15	B16	B18		25	31,5	25	100	34,5	29,5	48,5	M 6-20	63	63
B18	B12	B14	B15	B16	B18		25	31,5	25	100	34,5	29,5	48,5	M 6-20	63	63

Stainless steel														Accessories recom. hand lever		
Clamping point 1 Bore <b>d<sub>1</sub></b>	Clamping point 2						<b>b</b>	<b>k<sub>1</sub></b>	<b>k<sub>2</sub></b>	<b>l<sub>1</sub></b>	<b>l<sub>2</sub></b>	<b>m<sub>1</sub></b>	<b>m<sub>2</sub></b>	Hex socket cap screws <b>z<sub>1</sub> / z<sub>2</sub></b>	HEK for stainless steel clamp	
	Bore <b>d<sub>2</sub></b>															
B12	B12	B14	B15	B16	B18	B20	25	31,5	25	100	34,5	29,5	48,5	M 6-20	-	63
B14	B12	B14	B15	B16	B18	B20	25	31,5	25	100	34,5	29,5	48,5	M 6-20	-	63
B15	B12	B14	B15	B16	B18	B20	25	31,5	25	100	34,5	29,5	48,5	M 6-20	-	63
B16	B12	B14	B15	B16	B18	B20	25	31,5	25	100	34,5	29,5	48,5	M 6-20	-	63
B18	B12	B14	B15	B16	B18	B20	25	31,5	25	100	34,5	29,5	48,5	M 6-20	63	63
B20	B12	B14	B15	B16	B18	B20	25	31,5	25	100	34,5	29,5	48,5	M 6-20	63	63

Screw points <b>z</b>	
1	Hex socket cap screw steel, zinc-plated DIN 912-8.8 and lock nut steel DIN 985-8, zinc-plated (only for aluminum clamps)
2	Hex socket cap screw stainless steel DIN 912-A2-70 and lock nut stainless steel DIN 985-A2, glide coating

Surface / material <b>o</b>	
2	Aluminum, textured powder-coated, Black RAL 9005
8	Aluminum, blasted, matt
ED	Stainless steel, blasted, matt

**ORDER KEY**

**GKP - d<sub>1</sub> - d<sub>2</sub> - z - o**



**ACCESSORIES**

- Adjustable hand levers **HSK** see page 168
- Stainless steel adjustable hand levers **HEK** see page 170

**ON REQUEST**

- Clamping points with different diameters d<sub>1</sub> and d<sub>2</sub> or special diameter
- Screw points with hex head screws or mixed screw / adjustable hand lever elements
- Surface ball-burnished, anodized or powder-coated in other RAL colors

2D  
2C  
2B  
2A  
1D  
1C  
1B  
1A