

PRODUCT INFO

Joint clamps GMQ of die-cast aluminum have split clamping points with identical round or square cross-section that have been partially machined by cutting methods. They are comprised of two swivel clamps LMQ.

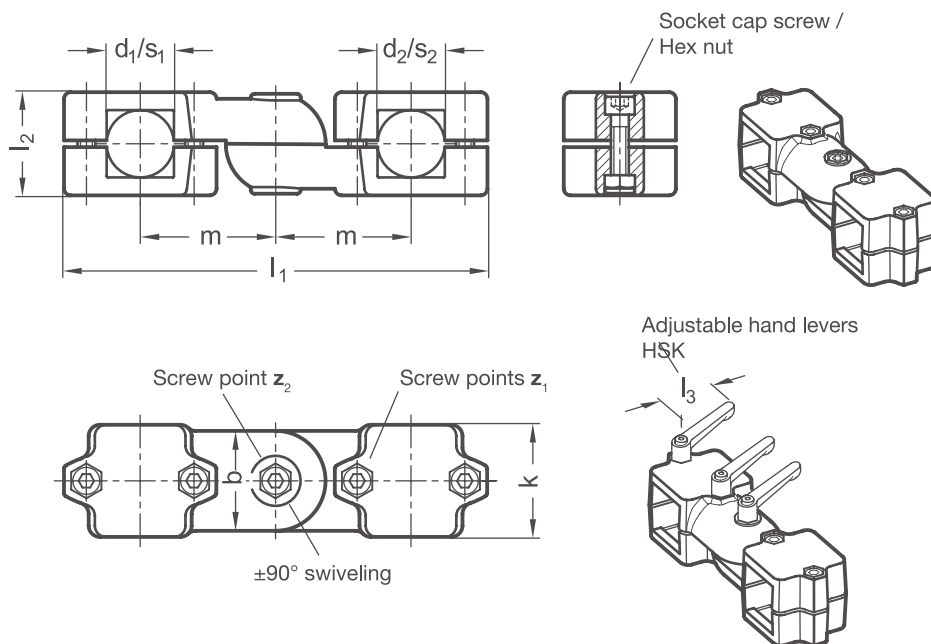
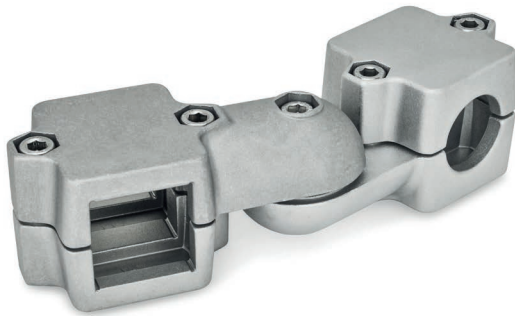
The clamping point bores are situated in a plane and are connected by the clamping joint to swivel by $\pm 90^\circ$, from parallel to perpendicular. They receive typically available construction tubes via multiple ribs in the cross-section of the bores.

At the screw points, hex socket cap screws or adjustable hand levers reduce the bore cross-section for clamping.

A hex socket cap screw or an adjustable hand lever at the clamping joint serves for locking the joint axis.

Adjustable hand levers are intended for repeated, tool-free clamping. Under the designation HSK, these are available separately for individual use and in other designs. Compared with the tool-operated hex socket cap screw, the clamping force achievable with an adjustable hand lever is lower due to the shorter lever length.

RoHS-compliant product



Clamping point 1 - Clamping point 2			Lug width b	k	l₁	l₂	m	Hex socket cap screw z₁	Hex socket cap screw z₂	Accessories recom. hand lever	
Bore - Bore d₁ - d₂	Bore - Square d₁ - s₂	Square - Square s₁ - s₂								HSK for z ₁ l₃	HSK for z ₂ l₃
B40 - B40	B40 - V40	V40 - V40	65	76	268	70	85	M 10-60	M 10-55	92	92
B40 - B42	-	-	65	76	268	70	85	M 10-60	M 10-55	92	92
B40 - B45	B40 - V45	V40 - V45	65	76	268	70	85	M 10-60	M 10-55	92	92
B40 - B48	-	-	65	76	268	70	85	M 10-60	M 10-55	92	92
B40 - B50	B40 - V50	V40 - V50	65	76	268	70	85	M 10-60	M 10-55	92	92
-	B42 - V40	-	65	76	268	70	85	M 10-60	M 10-55	92	92
B42 - B42	-	-	65	76	268	70	85	M 10-60	M 10-55	92	92
B42 - B45	B42 - V45	-	65	76	268	70	85	M 10-60	M 10-55	92	92
B42 - B48	-	-	65	76	268	70	85	M 10-60	M 10-55	92	92
B42 - B50	B42 - V50	-	65	76	268	70	85	M 10-60	M 10-55	92	92
-	B45 - V40	-	65	76	268	70	85	M 10-60	M 10-55	92	92
B45 - B45	B45 - V45	V45 - V45	65	76	268	70	85	M 10-60	M 10-55	92	92
B45 - B48	-	-	65	76	268	70	85	M 10-60	M 10-55	92	92
B45 - B50	B45 - V50	V45 - V50	65	76	268	70	85	M 10-60	M 10-55	92	92
-	B48 - V40	-	65	76	268	70	85	M 10-60	M 10-55	92	92
-	B48 - V45	-	65	76	268	70	85	M 10-60	M 10-55	92	92
B48 - B48	-	-	65	76	268	70	85	M 10-60	M 10-55	92	92
B48 - B50	B48 - V50	-	65	76	268	70	85	M 10-60	M 10-55	92	92
-	B50 - V40	-	65	76	268	70	85	M 10-60	M 10-55	92	92
-	B50 - V45	-	65	76	268	70	85	M 10-60	M 10-55	92	92
B50 - B50	B50 - V50	V50 - V50	65	76	268	70	85	M 10-60	M 10-55	92	92

Type
t

S	Stepless adjustment
---	---------------------

Screw points
z

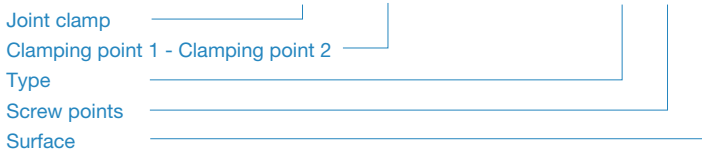
1	Hex socket cap screw steel, zinc-plated DIN 912-8.8 and lock nut steel DIN 985-8, zinc-plated
2	Hex socket cap screw stainless steel DIN 912-A2-70 and lock nut stainless steel DIN 985-A2, glide coating

Surface
o

2	textured powder-coated, Black RAL 9005
8	blasted, matt

ORDER KEY

GMQ - d₁-d₂ (d₁-s₂ / s₁-s₂) - t - z - o



ACCESSORIES

- Adjustable hand levers **HSK** see page 168

ON REQUEST

- Clamping points with different diameters d₁ and d₂ or special diameter
- Screw points with hex head screws or mixed screw / adjustable hand lever elements
- Surface ball-burnished, anodized or powder-coated in other RAL colors

2D
2C
2B
2A
1D
1C
1B
1A