

PRODUCT INFO

Joint clamps GST.P of glass fiber reinforced polyamide have slitted clamping points machined by cutting methods. They are comprised of two swivel clamps LST.P.

The clamping point bores are situated in a plane and are connected by the clamping joint to swivel by $\pm 90^\circ$, from aligned orientation to perpendicular. They receive typically available construction tubes with full surface contact over the entire cross-section of the bore.

Adapter bushings RBS.P can be used to reduce the bore cross-sections to a smaller diameter.

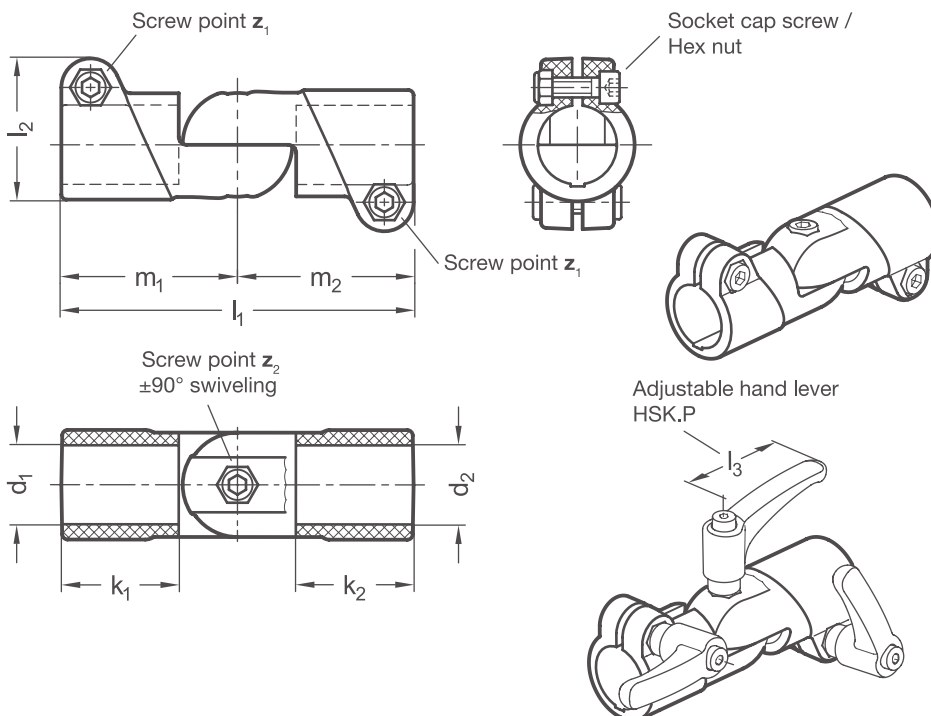
At the screw points, hex socket cap screws or adjustable hand levers reduce the bore cross-section for clamping. A hex socket cap screw or an adjustable hand lever at the clamping joint serves for locking the joint axis. The clamping joint can be adjusted either steplessly or based on the serration pattern.

Adjustable hand levers are intended for repeated, tool-free clamping. Under the designation HSK.P, these are available separately for individual use and in other designs. Compared with the tool-operated hex socket cap screw, the clamping force achievable with an adjustable hand lever is lower due to the shorter lever length.



Original design TCC-AP-AP

RoHS-compliant product



Clamping point 1	Clamping point 2							Hex socket cap screws	Hex socket cap screws	Accessories recom. hand lever	
Bore d_1	Bore d_2	k_1	k_2	l_1	l_2	m_1	m_2	z_1	z_2	HSK.P for z_1 / z_2 lever length l_3	
B 30	B 30	45	45	134	54	67	67	M 8-25	M 8-25	63	78

Type t	
S	Stepless adjustment
T	Adjustment with 10° division (serration)

Screw points z	
2	Hex socket cap screw stainless steel DIN 912-A2-70 and lock nut stainless steel DIN 985-A2, glide coating

Surface o	
2	Polyamide (PA), glass fiber reinforced, Black RAL 9005 matt, temperature resistant up to 100 °C
4	Polyamide (PA), glass fiber reinforced, Gray RAL 7040 matt, temperature resistant up to 100 °C

ORDER KEY

GST.P - d_1 - d_2 - t - z - o



ACCESSORIES

- Adapter bushings **RBS.P** see page 26
- Adjustable hand levers **HSK.P** see page 28