

### PRODUCT INFO

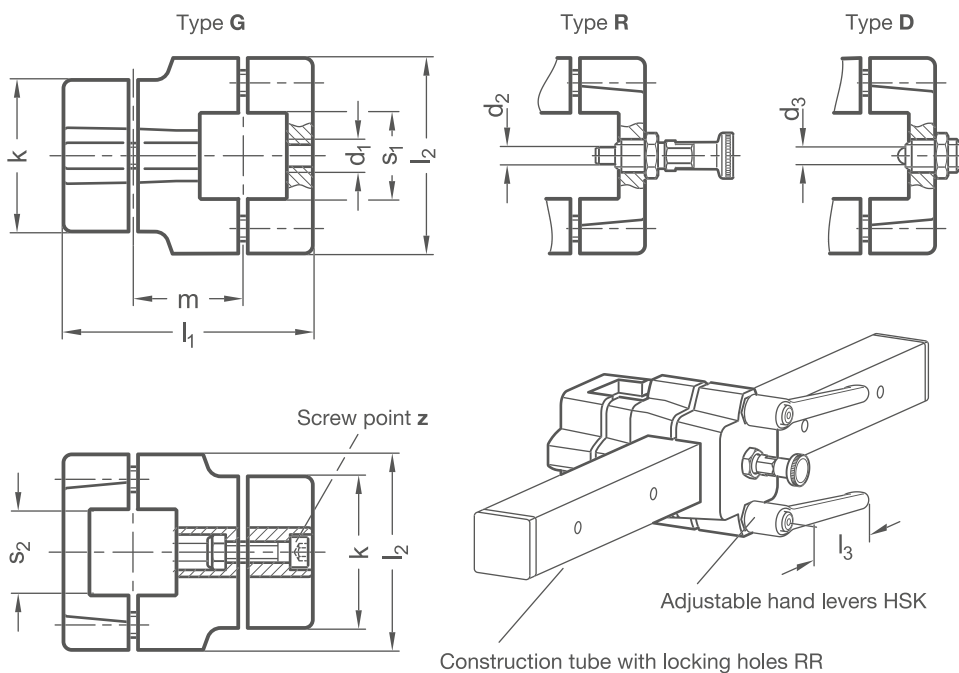
**Cross locking slide units KM.R** of die-cast aluminum have split clamping points and slide unit bores machined by cutting methods. The bores are offset in the plane and arranged at an angle of 90°.

Together with the guide tube, the slide unit bore forms a solid square guide mechanism that can be adjusted and clamped for low play. With the indexing plungers or spring plungers in the top part, it is possible to repeatedly move quickly and easily to positions along a square construction tube defined by bores.

Depending on the design, the part to be moved is fastened to the slide unit or the slide unit itself is installed at the place of use such that the entire locking unit moves together. At the screw points, hex socket cap screws or adjustable hand levers reduce the slide unit bore or clamping point size.

Adjustable hand levers are intended for repeated, tool-free clamping. Under the designation HSK, these are available separately for individual use and in other designs. Compared with the tool-operated hex socket cap screw, the clamping force achievable with an adjustable hand lever is lower due to the shorter lever length.

**RoHS-compliant product**



| Clamping point 1      | Clamping point 2      | d <sub>1</sub> | Pin -0,05<br>Bore <sup>+0,03</sup> / <sub>+0,08</sub><br>d <sub>2</sub> | Ball Ø<br>d <sub>3</sub> | Clamping length<br>k | l <sub>1</sub> | l <sub>2</sub> | m    | Hex socket cap screws | Accessories recom. hand lever         |
|-----------------------|-----------------------|----------------|---|--------------------------|----------------------|----------------|----------------|------|-----------------------|---------------------------------------|
| Square s <sub>1</sub> | Square s <sub>2</sub> |                |   |                          |                      |                |                |      |                       | HSK for z lever length l <sub>3</sub> |
| V 25                  | V 25                  | M 8            | 5   | 3,5                      | 50                   | 79,5           | 68             | 33,5 | M 8-30                | 78                                    |
| V 30                  | V 30                  | M 8            | 5   | 3,5                      | 50                   | 79,5           | 68             | 33,5 | M 8-30                | 78                                    |
| V 40                  | V 40                  | M 12           | 8   | 6,5                      | 76                   | 125            | 98             | 55   | M 10-50               | 92                                    |
| V 50                  | V 50                  | M 12           | 8   | 6,5                      | 76                   | 125            | 98             | 55   | M 10-50               | 92                                    |

Type  
t

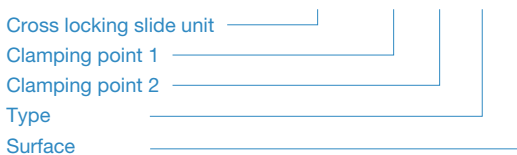
|   |                       |
|---|-----------------------|
| G | With thread           |
| R | With indexing plunger |
| D | With spring plunger   |

Surface  
o

|   |  |
|---|--|
| 2 | textured powder-coated, Black RAL 9005 |
| 8 | blasted, matt                          |

ORDER KEY

**KM.R - s<sub>1</sub> - s<sub>2</sub> - t - o**



ACCESSORIES

- Adjustable hand levers HSK see page 168

ON REQUEST

- Surface  
ball-burnished, anodized or powder-coated in other RAL colors