

PRODUCT INFO

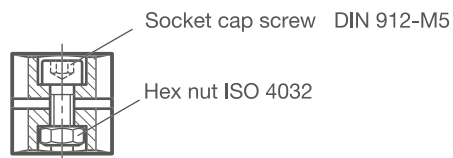
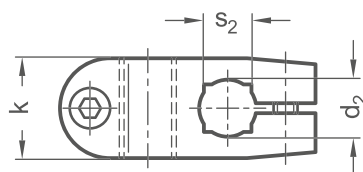
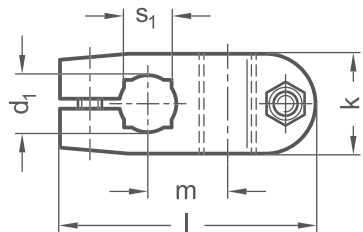
Cross clamp mountings KP are made of polyamide by injection molding and have slitted clamping points.

The bores of the clamping points are offset in the plane and arranged at an angle of 90°. They receive rods and tubes with round or square cross-sections via the additional cast square bore.

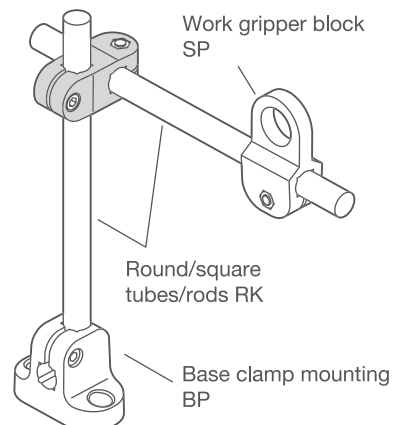
Stainless steel screws and nuts reduce the bore cross-section for clamping.

The exceptionally lightweight plastic elements are well-suited for use in corrosive environments.

RoHS-compliant product



Application example



Clamping point 1	Clamping point 2					
Bore d_1	Bore d_2	k	Length l	m	Square S_1	Square S_2
B 10	B 10	21	52	17	V 8	V 8
B 12	B 12	21	52	17	V 10	V 10
B 14	B 14	21	52	17	V 12	V 12

2D

2C

2B

2A

1D

1C

1B

1A

ORDER KEY

KP - d_1 - d_2

