

PRODUCT INFO

Base swivel clamp mountings LGF are made of cast aluminum round profiles and have a smooth clamping lug machined by cutting methods.

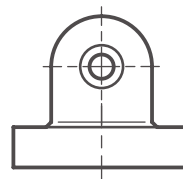
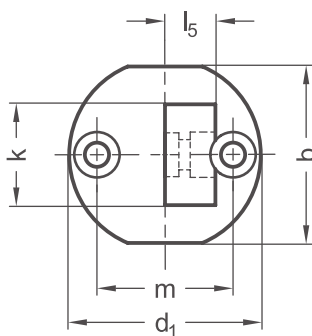
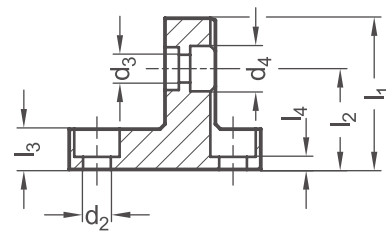
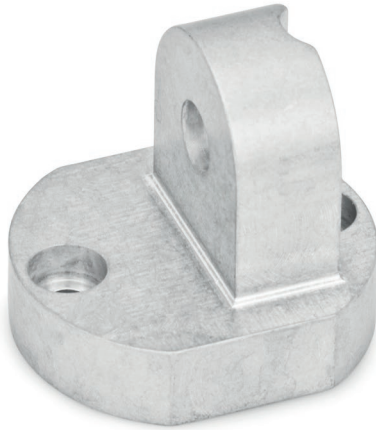
The lug is centered and situated at an angle of 90° to the flange face. The base with two bores serves as an interface or for fastening the clamp mounting to the place of use.

The bore distance m is the same for all clamp mountings and the available accessories with fastening options to ensure simple replacement and combination.

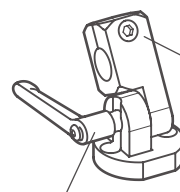
Base swivel clamp mountings LGF can be combined with other swivel clamp mountings with identical k dimensions to create joint clamp mountings. Clamping kits HM are available, type S with a screw and type K with an adjustable hand lever.

The relevant dimensions for ordering the clamping kits are found in the dimensions table.

RoHS-compliant product



Clamping kit
HM, type S



Clamping kit
HM, type K

Joint clamp mounting with
swivel clamp mounting
LGF

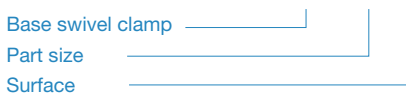
k	b	d ₁	Pass-through bore d ₂ for	Swivel bore d ₃	d ₄	l ₁	l ₂	l ₃	l ₄	l ₅	m	Accessories
												Clamping kit HM for d ₃
16	29	31,5	M 4	4,5	7,5	25	17	7	3	8	22	M 4-16
20	35	38	M 5	5,5	9	30	20	8	2,5	10	27	M 5-20
25	41	45	M 6	6,5	10,5	37	24,5	10	4	12,5	32	M 6-25
30	44	50	M 6	6,5	10,5	44,5	29,5	12,5	6,5	15	36	M 6-30

Surface
o

G	Tumbled, matt
S	Anodized black

ORDER KEY

LGF - k - o



ACCESSORIES

– Clamping kit **HM** see page 174

ON REQUEST

- Surface anodized in colors
- Retaining magnet