

PRODUCT INFO

Swivel clamps LKF of die-cast aluminum or precision-cast stainless steel have a smooth fastening lug.

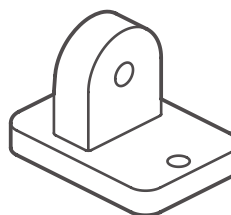
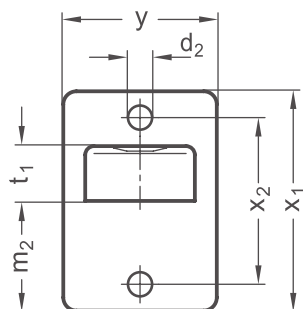
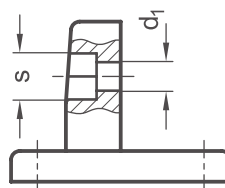
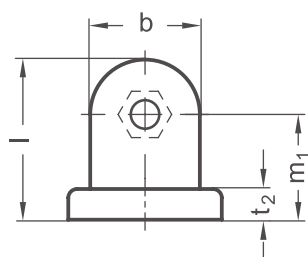
The fastening lug is centered and situated at an angle of 90° to the flange face.

The flange with two bores serves as an interface or for fastening the clamp to the place of use.

The screw point receives a hex head or hex socket cap screw or a lock nut for fastening any additional parts.

By combining swivel clamps with identical screw points, it is possible to assemble any type of joint clamp.

RoHS-compliant product



Lug width b	d₁	d₂	l	m₁	m₂	t₁	t₂	s	x₁	x₂	y
25	6,5	5,5	36,5	24	25	12,5	7	10	50	38	35

Surface / material o	
2	Aluminum, textured powder-coated, Black RAL 9005
8	Aluminum, blasted, matt
ED	Stainless steel, blasted, matt

ORDER KEY

LKF - b - o



ON REQUEST

– Surface ball-burnished, anodized or powder-coated in other RAL colors

2D
2C
2B
2A
1D
1C
1B
1A