

PRODUCT INFO

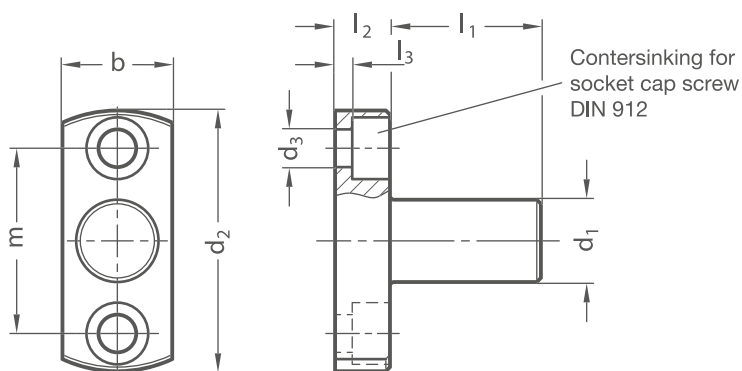
Flanged mounting bolts RKF are turned from round steel profiles and are zinc-plated.

The base with two bores serves as an interface or for fastening the flanged mounting bolt to the place of use.

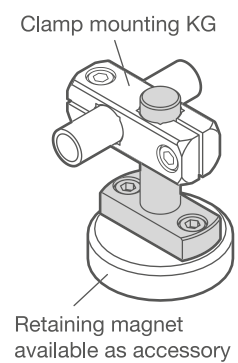
The bore distance m within a nominal size is the same on all clamp mountings with fastening options to ensure easy replacement and combination.

Flanged mounting bolts RKF are suitable alternatives to base clamp mountings BG when especially low assembly heights are required.

RoHS-compliant product



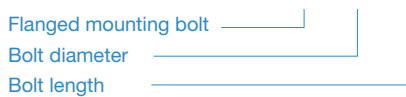
Application example



d₁	l₁		b	d₂	Pass-through bore d₃ for	l₂	l₃	m
8	18	32	14	31,5	M 4	6	2	22
10	21	37	16	38	M 5	8	2,5	27
12	22	39	16	38	M 5	8	2,5	27
15	27,5	47,5	20	45	M 6	10	4	32
16	28	49	20	45	M 6	10	4	32
20	35	60	25	50	M 6	10	4	36

ORDER KEY

RKF - d₁ - l₁



ON REQUEST

- Retaining magnet