

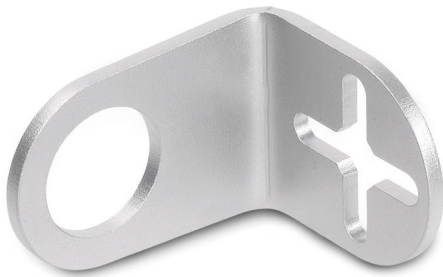
**PRODUCT INFO**

**Stainless steel sensor holders SG** are made from laser-cut and bent stainless steel sheets.

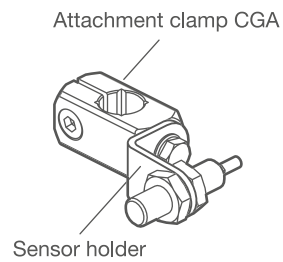
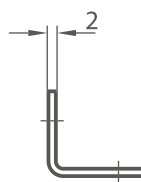
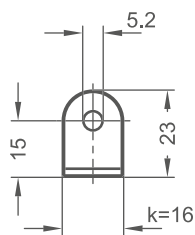
They hold sensors with male thread, which are fastened with two lock nuts. The fastening bore is adapted to the central thread of the attachment clamps CGA and the attachment swivel clamp mountings LGA.

For the dimension  $k=30$ , the cross-shaped slots offer additional adjustment options and allow the use of two fastening screws. However, these are not included.

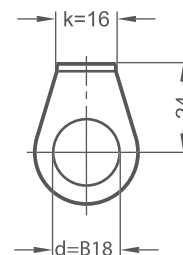
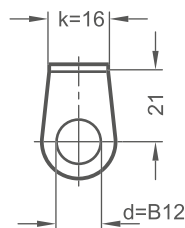
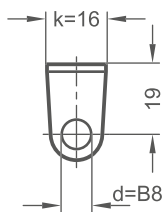
**RoHS-compliant product**



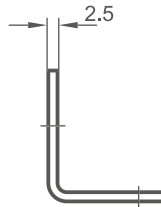
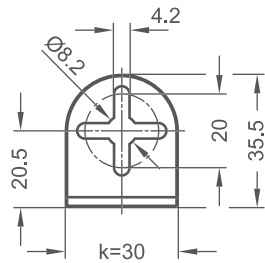
Lug width  $k=16$



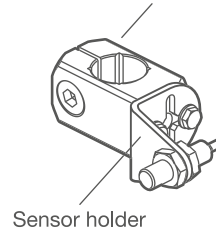
Top views for different bore  $\varnothing d$



Lug width k=30

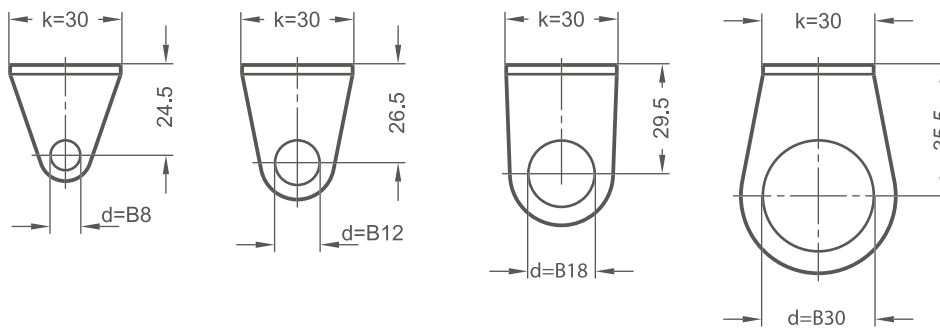


Attachment clamp CGA



Sensor holder

Top views for different bore Ø d



d	k
B 8	16
B 8	30
B 12	16
B 12	30
B 18	16
B 18	30
B 30	30

ORDER KEY

SG - d - k

