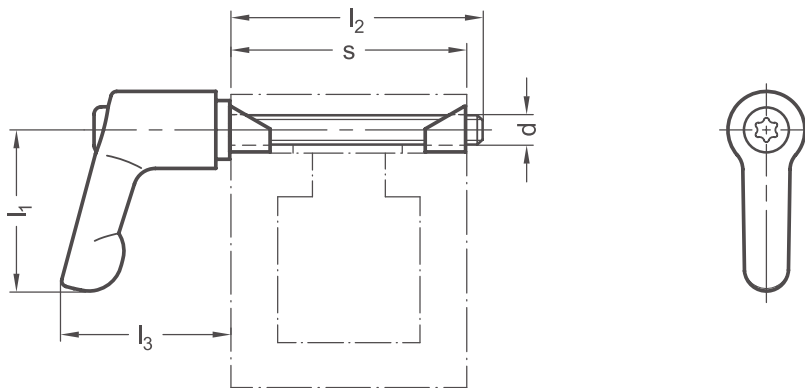


PRODUCT INFO

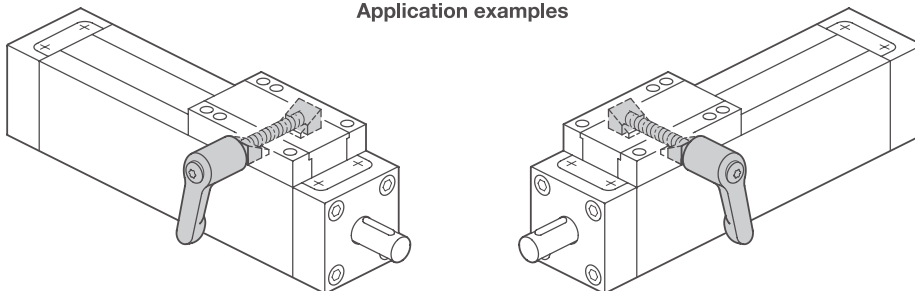
Carriage clamping units VZKP are used to clamp the spindles of linear units after adjustment. The thread of the adjustable hand lever clamps the wedge mechanism.

The resulting friction between the clamping wedges and the carriage guideway secures the carriage position efficiently and without backlash. Adjustable hand levers are made of powder-coated zinc die-cast, screw inserts installed here are made of turned stainless steel and the clamping wedges are made of brass.

RoHS-compliant product



Application examples



s Linear unit nominal diameter	l₁	d	l₂	l₃
30	22	M 4	32	23
50	30	M 5	50	31

Surface o	
OR	Textured powder-coated, Orange RAL 2004

FOR USE WITH

– Profile linear units

ORDER KEY

VZKP - s - l₁ - o

